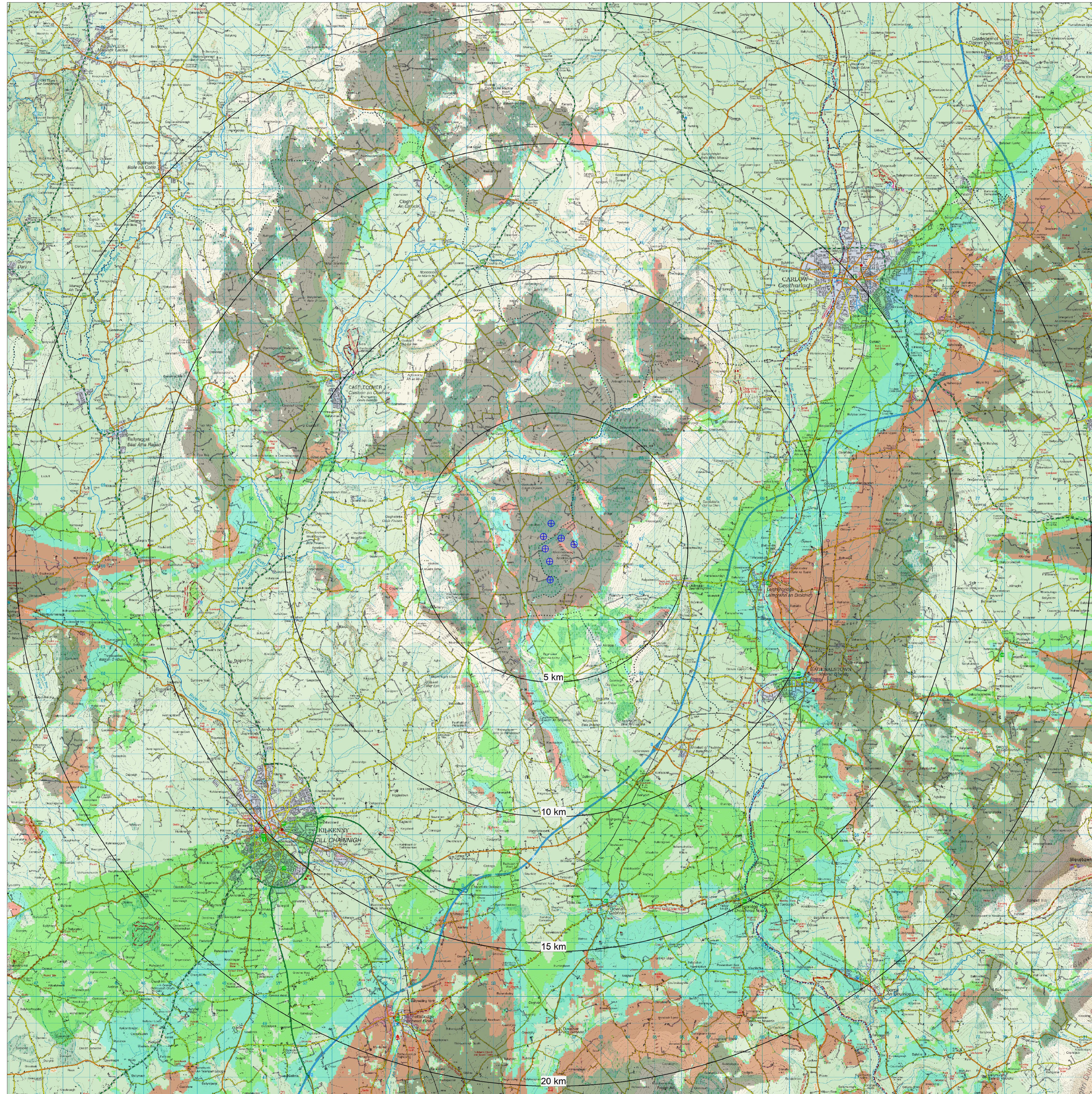


ZTV Base:

This ZTV map is based on turbine visibility at hub height (104m).

hub height



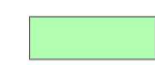
Legend:

Proposed Wind Turbines Locations

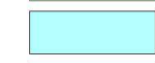


Number of turbines theoretically visible

1 to 2



3 to 4



5 to 6



7



Date:	Rev:	Description:	Drawn By:
-------	------	--------------	-----------

Prepared by:



Client:

White Hill Wind Limited

Job Title:

White Hill Wind Farm

Drawing Title:

Figure 144: ZTV map at hub height

Drawing No.:	Revision No.:
WHI001_PAS_PHO_04	0

Scale:	Date:
(A1) 1:75,000	25/10/2022

Drawn By:	Checked By:	Confirmed By:
J.B.	C.M.P.	S.C.

Description:

A 20km Radius Zone of Theoretical Visibility map for the proposed wind farm at hub height.

The ZTV represents a 'worst case scenario' as it does not take into account the potential screening of views by buildings or vegetation